



BRIGHT STAR



LOGISTICS CENTER

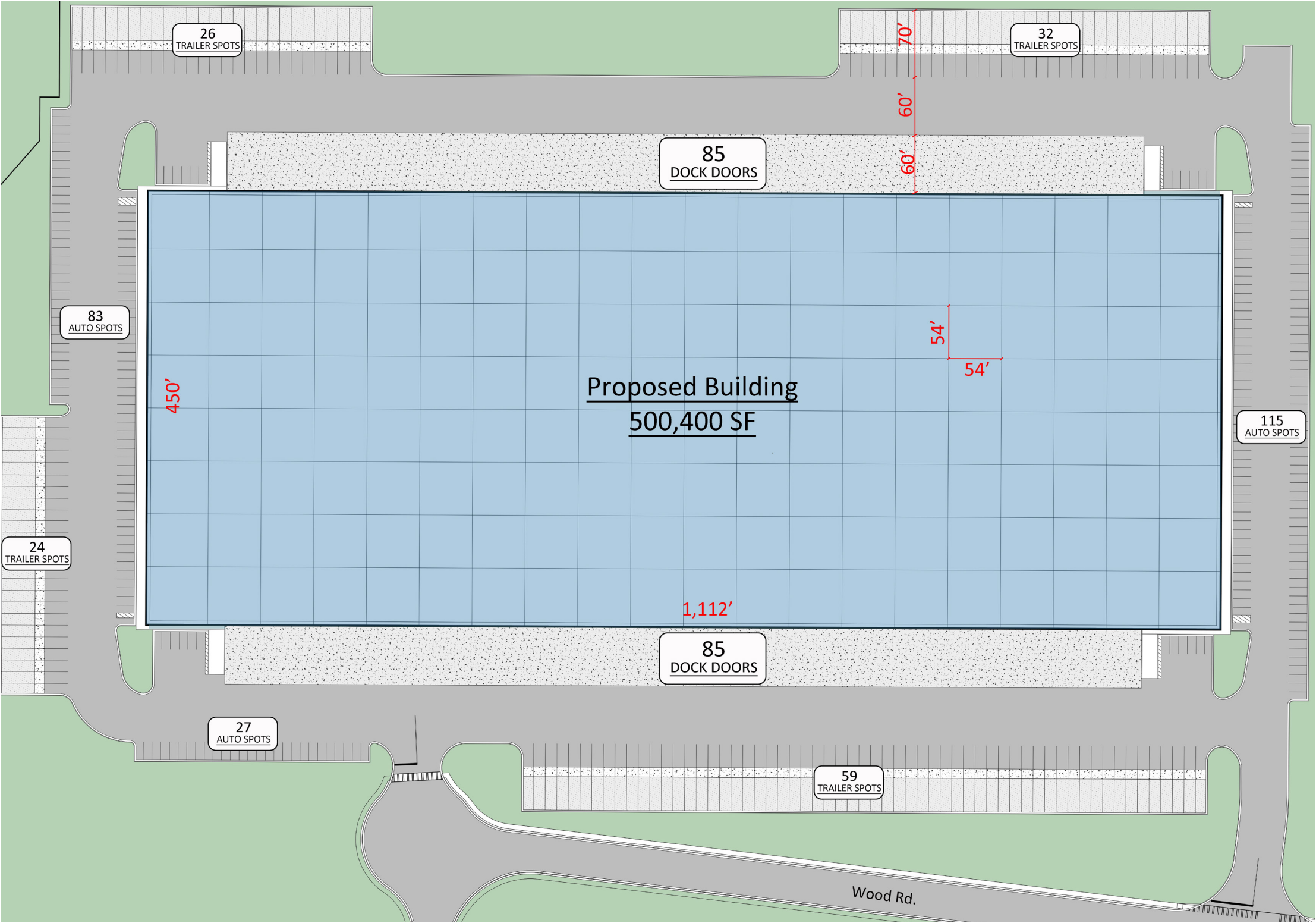
7550 Wood Road | Douglasville, Georgia 30134

500,400 SF | CROSS DOCK

Owned & Managed by



500,400 SF
FOR LEASE

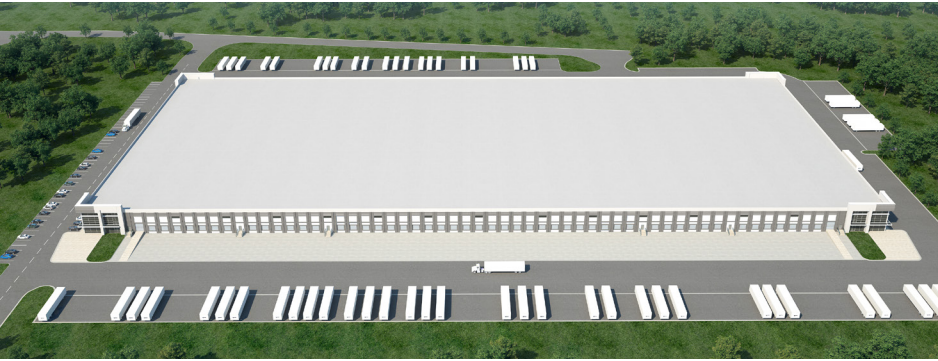


OVERVIEW

Bright Star Logistics Center is a multi-building industrial park consisting of 855,000 SF of existing product and future development up to 2,800,000 SF. The park is located in Douglasville, Georgia in the I-20 West/Douglasville submarket. Bright Star Logistics Center is located 1.7 miles from Interstate 20.

BUILDING SPECS

| | |
|-------------------|--|
| Total building sf | 500,400 sf (450'd x 1,112' w) |
| Configuration | Cross dock |
| Column spacing | 54' x 54 with 60' speed bays |
| Dock doors | 170 (9x10) |
| Drive-in doors | 4 |
| Truck court depth | 120' x 190' |
| Auto parking | 225 spaces |
| Trailer parking | 141 spaces |
| Ceiling height | 36' clear |
| Lighting | 6 lamp LED (confirm) |
| Electrical | 1,600 amps @ 480/277 V (confirm) |
| Sprinkler | ESFR w/ 16.8 sprinkler heads (conf) |
| Roof | TPO/mechanically attached (15 yr warranty) |
| Floors | 10 mil vapor barrier within slab (conf) |





NOTABLE DISTANCES

SHIPPING HUBS

| | |
|-------|----------|
| FedEx | 13 miles |
| UPS | 18 miles |

INTERMODAL

| | |
|------------------|------------|
| Norfolk Southern | 14.3 miles |
| CSX | 27.3 miles |

INTERSTATE

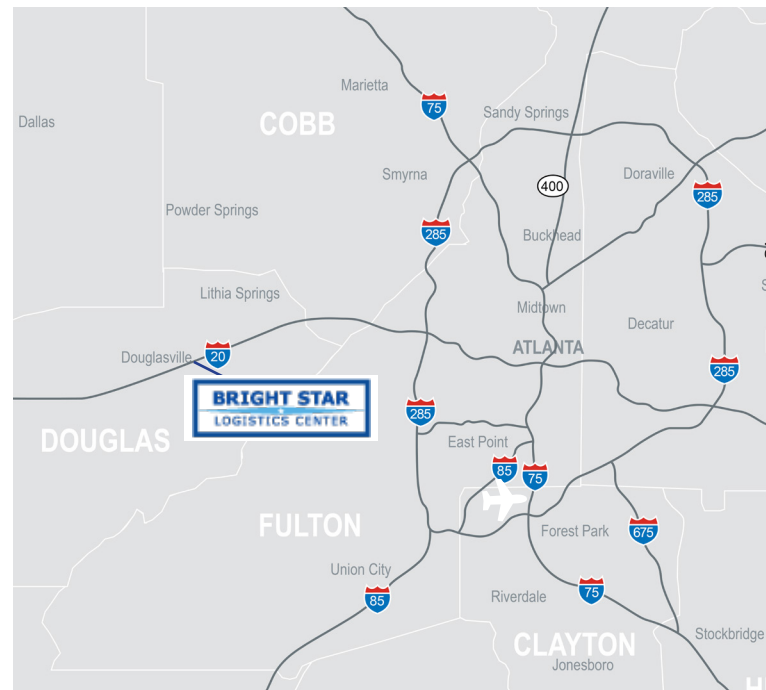
| | |
|-------|------------|
| I-20 | 1.7 miles |
| I-285 | 18.3 miles |

AIRPORT

| | |
|--|------------|
| Hartsfield-Jackson Atlanta Intl. Airport | 33.3 miles |
|--|------------|

PORT CITIES

| | |
|--------------|-----------|
| Savannah, GA | 272 miles |
|--------------|-----------|



Chris Tomasulo
Managing Director
T + 404.995.2462
M + 770.330.3263
chris.tomasulo@am.jll.com

Reed Davis
Executive Vice President
T +1 404 995 2227
M +1 404 844 9128
reed.davis@am.jll.com

Bob Currie
Managing Director
T +1 404 995 2280
M +1 404 368 7111
bob.currie@am.jll.com

Bradley C. Pope, SIOR, CCIM
Senior Vice President
T + 1 404 995 2261
M + 1 404 784 7673
brad.pope@am.jll.com